

Mineral Restoration Seminar

26th September 2007

National Memorial Arboretum,
Alrewas, Staffordshire



Objectives of the day

- Discuss some of the major issues affecting sand and gravel restoration.
- Maximise the opportunities for environmental and socio-economic benefits from sand and gravel restoration along the River Trent.
- Promote the exchange of good practice.

Ruth Needham

OnTrent Project Manager

OnTrent Vision

A Trent floodplain rich in wildlife habitats, landscape and historic features, for the benefit of all, both now and in the future



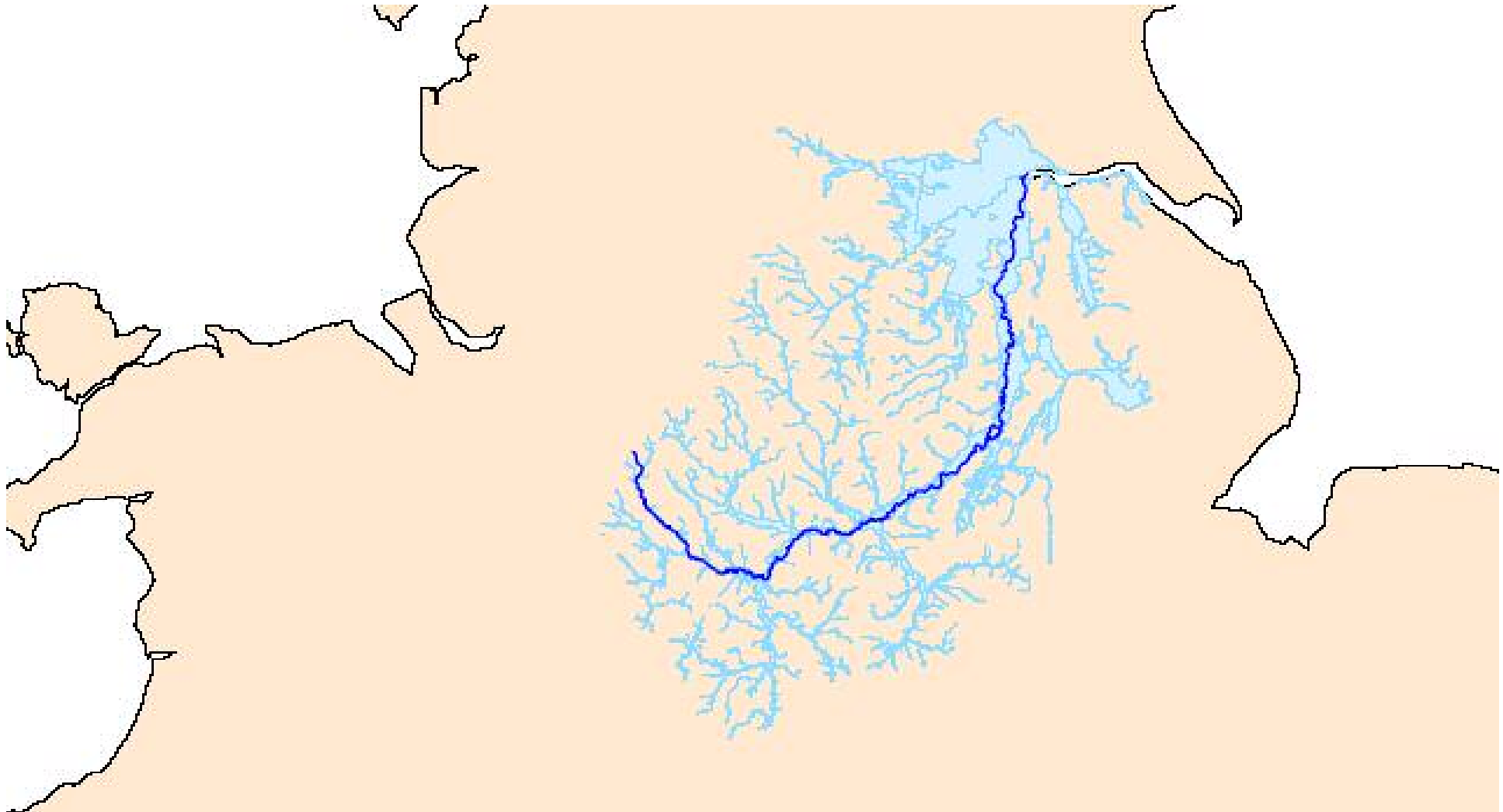
The OnTrent Partnership



LEICESTERSHIRE
COUNTY COUNCIL
DEPARTMENT OF
PLANNING AND TRANSPORTATION



The Trent Catchment and its floodplain



OnTrent is delivered by:

- 1) Influencing and contributing to partner **policy** and strategic plans.
- 2) Raising **awareness** about OnTrent and the issues it seeks to address through publicity, training and events.
- 3) Delivering **projects** both by OnTrent and through the partner organisations.

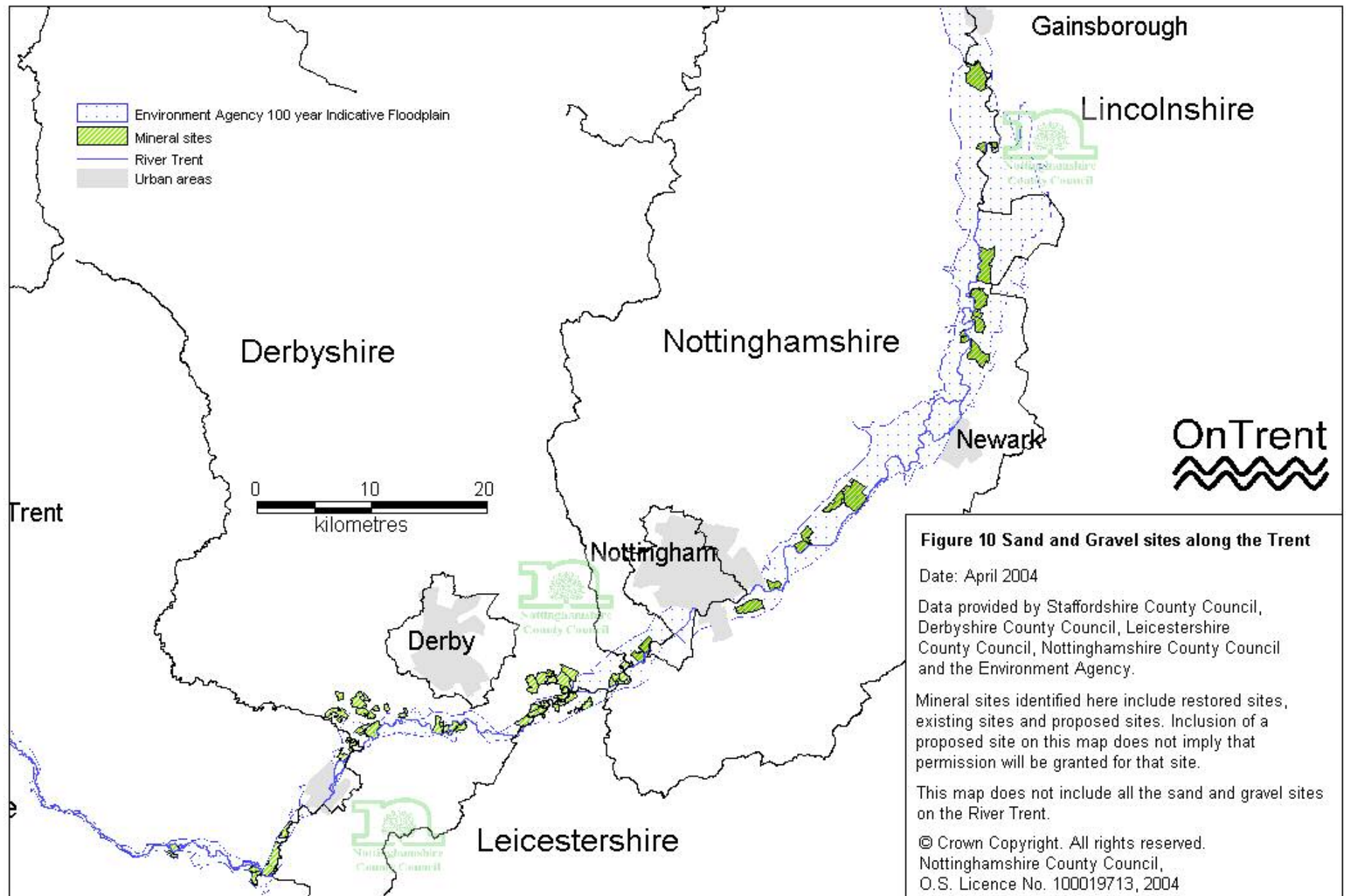
Trent Valley Sand and Gravel

- Trent important for sand and gravel.
- Gravel is good quality and deep and 'extensive'.
- Quantities of sand and gravel

In 2003 ('000 tonnes)

West Midlands	9590
East Midlands	9842
North East	1254
North West	5220
Yorks. & West Humber	4770
East of England	14,381
South East	17,915
South West	6,413

*=28% of English total
(Office National Statistics, 2004)*



Restoration on the Trent....

- Lots of potential along the Trent, not fully realised, especially with older sites.
- Lack of inert infill material
- Conflicts within 'the system'
- Potential for greater benefits.

See *-OnTrent Restoration Objectives*
-Priority Habitats

The **Trent Valley Way**

- A continuous footpath along the Trent Valley
- Links Biddulph Moor and the Humber Estuary
- 270 km long
- A 'spine' that links places of interest.
- Includes circular routes and spurs.
- Attracts people and raises awareness of the Trent Valley.



To summarise

- OnTrent here to encourage best practise
- Provide a network for partners dealing with similar issues.
- Huge legacy being left on the landscape, major chance for sustainable investment.
- Opportunities in the Trent floodplain for Biodiversity, Archaeology, Recreation and Communities.